

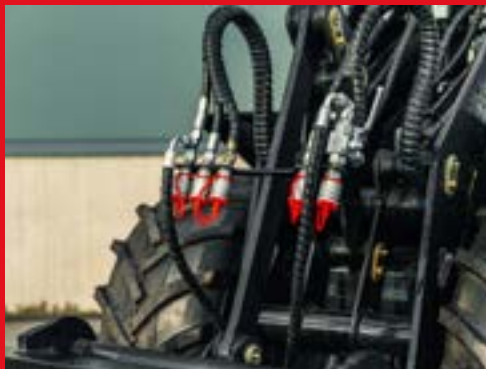


**RTL 1025 – a wheel loader made for efficient material handling**

The RTL 1025 is a powerful and reliable wheel loader designed for operators who value performance, control, and versatility. Built for daily work in construction, agriculture, and industrial environments, it delivers smooth operation, strong lifting capability, and excellent maneuverability in confined spaces.

Mail: [sales@rtlm.cc](mailto:sales@rtlm.cc)  
[www.rtlm.cc](http://www.rtlm.cc)

Facebook: [rtl\\_machinery](https://www.facebook.com/rtl_machinery)  
Whatsapp: +86 152 656 52 973





### Standard Specification

<b>Total weight</b>	1 700 kg
<b>Length</b>	3 775 mm
<b>Width</b>	1 325 mm
<b>Height</b>	2 350 mm
<b>Maximum dumping height</b>	2 000 mm
<b>Dumping reach</b>	600 mm
<b>Wheel base</b>	1 575 mm
<b>Engine</b>	403J-11
<b>Tipping load in shovel, vehicle straight</b>	980 kg
<b>Tipping load in shovel, vehicle at 68°</b>	600 kg
<b>Speed</b>	0-17 km/h
<b>Tire specifications</b>	31*15..5-15TL
<b>Maximum turning angle</b>	±50°